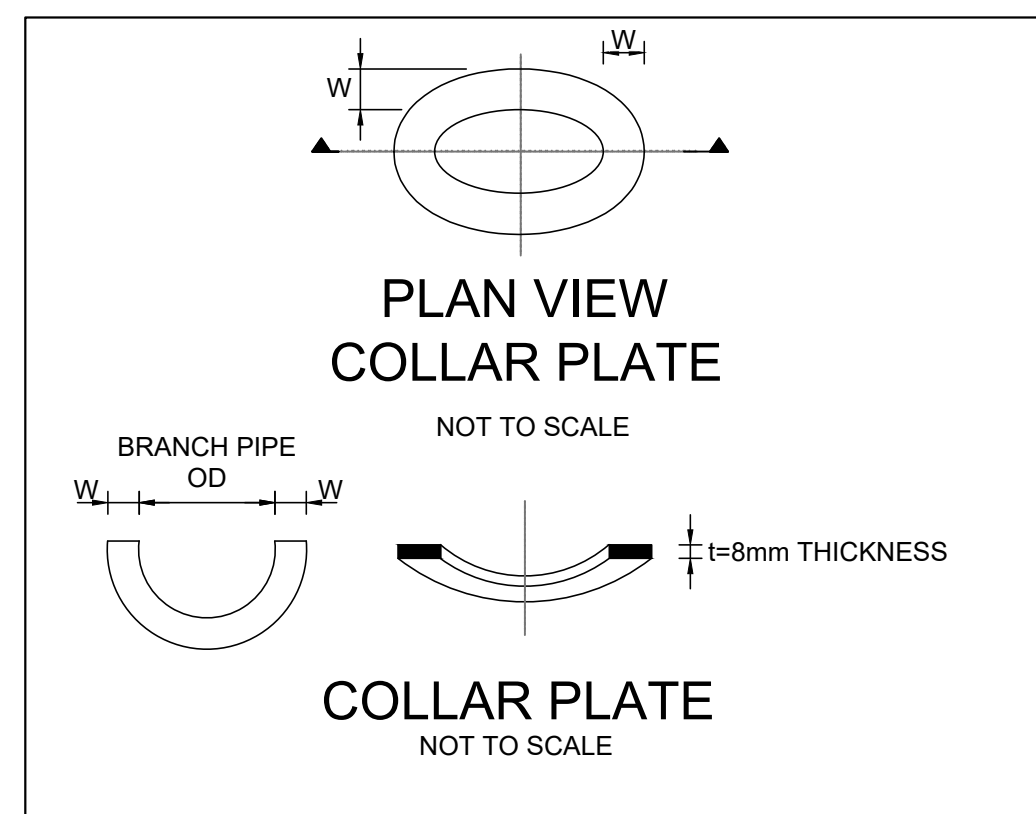
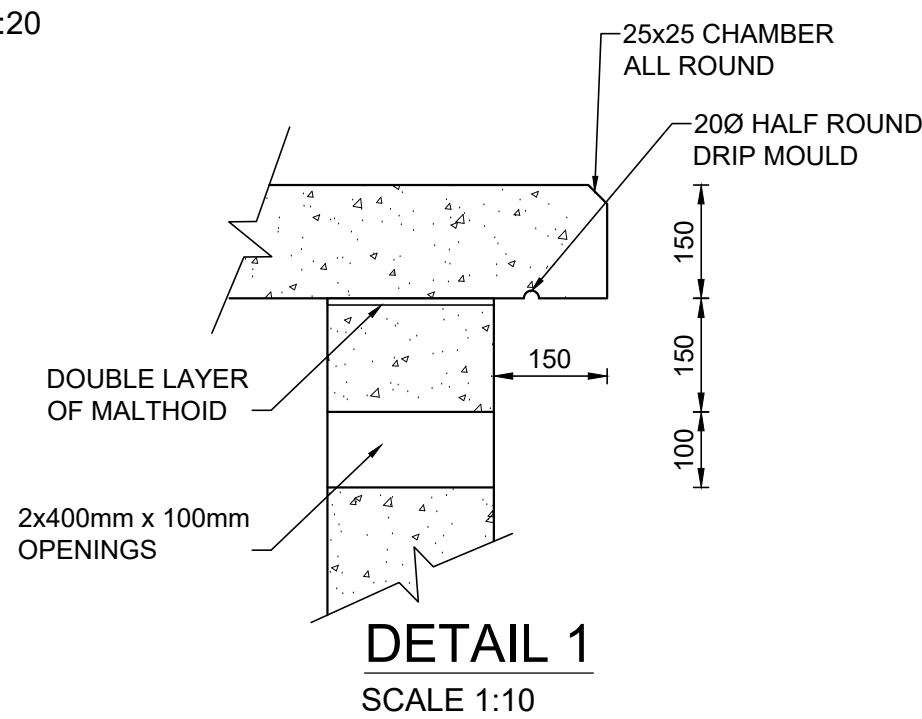
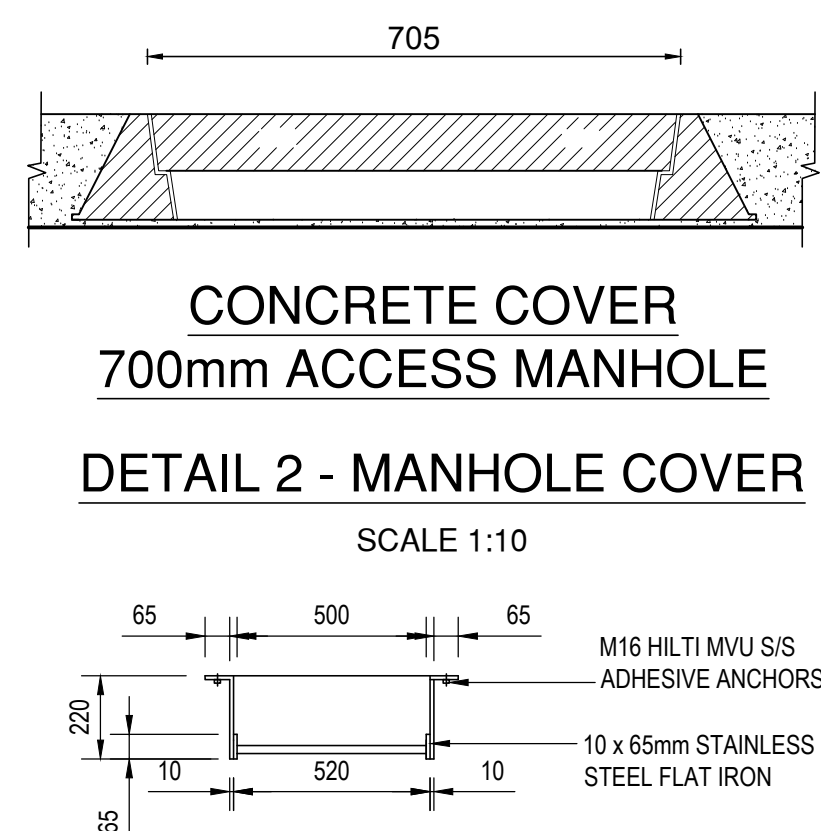
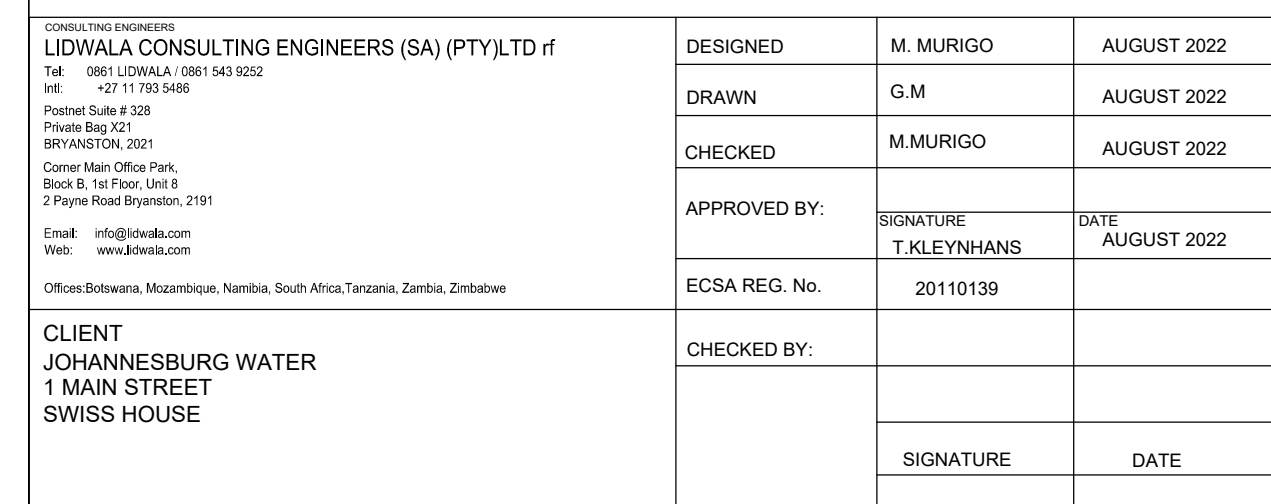


- # NOTES:
1. DRAWINGS MUST NOT BE SCALED.
 2. THIS DRAWING TO BE READ IN CONJUNCTION WITH THE GENERAL NOTES DRAWINGS AND ALL PROJECT SPECIFICATIONS.
 3. ACCORDING TO THE COPYRIGHT ACT (ACT No 98 OF 1978) NO PART OF THIS DOCUMENT MAY BE REPRODUCED, STORED IN A RETRIEVAL SYSTEM OR TRANSMITTED IN ANY FORM OR BY ANY MEANS WHATSOEVER INCLUDING MECHANICAL, ELECTRONIC, PHOTOCOPYING, MICROFILMING OR ANY OTHER SYSTEM OF INFORMATION STORAGE WITHOUT WRITTEN PERMISSION OF JOHANNESBURG WATER.
 4. ALL FITTINGS TO BE LINED WITH 600 MICRONS OF FUSION BONDED EPOXY INTERNALLY & EXTERNALLY UNLESS OTHERWISE STATED.
 5. ALL FLANGES TO TABLE 1600/3 OF SANS 1123.
 6. FITTINGS ARE SUBJECT TO CHANGE UPON CONFIRMATION OF EXISTING PIPE MATERIALS.
 7. CONTRACTOR TO CONFIRM LOCATION OF ALL SERVICES AND DIMENSIONS OF FITTINGS BEFORE COMMENCEMENT OF MANUFACTURE. FINALS LEVELS TO BE CONFIRMED ON SITE BEFORE CONSTRUCTION.
 8. ALL BURIED FLANGED CONNECTIONS SHALL BE WRAPPED WITH PETROLATUM MASTIC AND PVC WRAPPING.
 9. CONTRACTOR TO PROVIDE TECHNICAL DETAILS OF TYPE 1A LOCKABLE POLYMER CONCRETE MANHOLE COVER AND FRAME FROM SUPPLIER FOR APPROVAL FROM THE ENGINEER BEFORE ORDERING.
 10. ALL DIMENSIONS ARE IN MILLIMETERS UNLESS OTHERWISE STATED.
 11. SW = SITE WELD



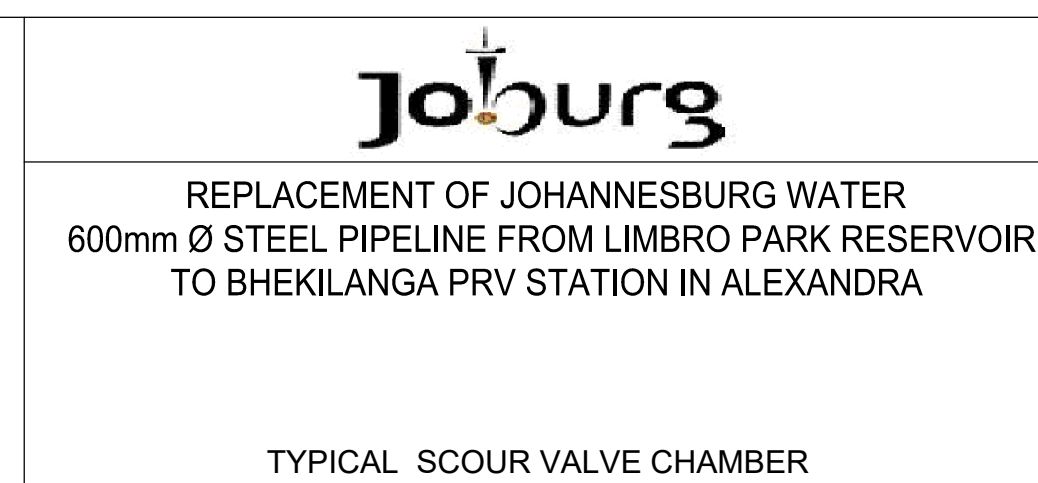
STEEL PIPE FITTINGS AND ITEM LIST					
ITEM NO.	DIMENSIONS	MATERIAL	DESCRIPTION	QUANTITY	WALL THICKNESS (mm)
SV1		API 5L GRADE X42 STEEL	UNEQUAL TEE WITH 610mm OD 1220mm LONG ENDED MAIN BARREL WITH PLAIN ENDS BEVELLED FOR SITE WELDING AND 273.1mm OD CENTRAL BRANCH WITH FLANGED END. PE-PE - 1220mm LONG, CL-FL - 610mm LONG. EXTERNAL COATING - SOLVENT FREE FUSION BONDED EPOXY COATING INTERNAL COATING - 12mm THICK CEMENT MORTAR LINING w = 137.5 mm	1	8mm
SV2		API 5L GRADE X42 STEEL	273.1mm OD 45° THREE SEGMENTED MEDIUM RADIUS BEND FLANGED BOTH ENDS	1	8mm
SV3			273.1mm OD 1200mm LONG PIPE WITH CENTRAL ANCHOR FLANGE TO MATCH OD OF PIPE AND FLANGE BOTH ENDS. CL-FL - 600mm LONG, FL-FL - 1200mm LONG	1	8mm
SV4			250mm ND WEDGE VALVE WITH NON-RISEING SPINDLE AND CAP TOP FOR MANUAL AND VERTICAL OPERATION FLANGED BOTH ENDS, FL-FL - 380mm	1	
SV5		API 5L GRADE X42 STEEL	250mm ND KLAMFLEX DISMANTLING JOINT FLANGED BOTH ENDS OR SIMILAR APPROVED. FL-FL-215mm	1	8mm
SV6			273.9mm OD 1000mm LONG PLAIN ENDED PIPE WITH LOOSE FLANGE AND ANCHOR FLANGE 400mm FROM PLAIN END. PLAIN END 600mm FROM ANCHOR FLANGE SHALL BE BEVELLED FOR SITE WELDING AND LOOSE FLANGE TO SUIT.FINAL MEASUREMENTS TO BE CONFIRMED ON SITE.	1	8mm

ISSUED FOR TENDER



17 HARRISON STREET
MARSHALLTOWN
2107

TEL: (011) 688-1400
FAX: (011) 688-1529



SURVEY INFORMATION		APPROVAL BY JW DEPOT			SCALE		AMENDMENTS		DATE:	DRAWING No. JW14090R-AL-DET05-V												
PROJECT SURVEYOR:		CHECKED					REV:	DESCRIPTION														
		APPROVED BY:				A	ISSUED FOR TENDER PURPOSES ONLY	AUGUST 2022														
DATE:			SIGNATURE	DATE						<div><div>JW14090R-AL</div><div>DET 05</div><div>—</div><div>A</div></div> <div><div>PROJECT No.</div><div>DRAWING No.</div><div>REV.</div></div> <div><div>A1</div><div>SHEET</div><div>1</div><div>OF</div><div>1</div></div> <div><div>ORIGINAL PAGE SIZE</div><div>FILE No.</div></div>												
CCTV INFORMATION		APPROVAL BY JW PLANNING																				
CCTV COMPANY:		CHECKED																				
		APPROVED BY:																				
DATE:			SIGNATURE	DATE																		